

**PROTOTYPE DEVELOPER EDITION
WORK IN PROGRESS**



HTC VIVE DEVELOPER EDITION
Setup guide pamphlet VERSION 22



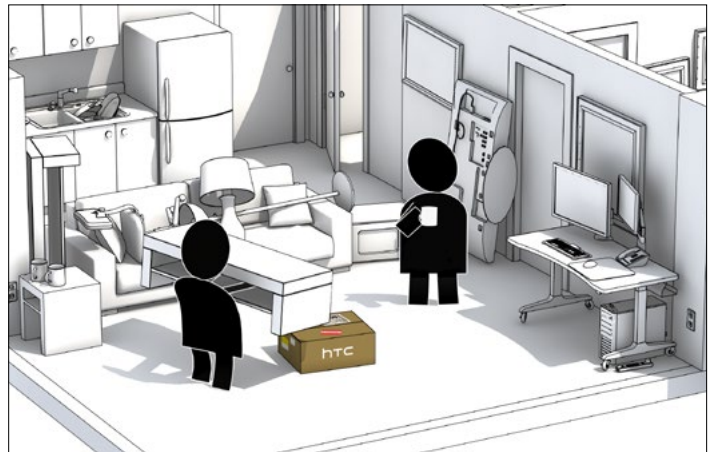
01 Select room with some free space for room-scale VR.



02 Escort unpredictable, untracked objects from space.



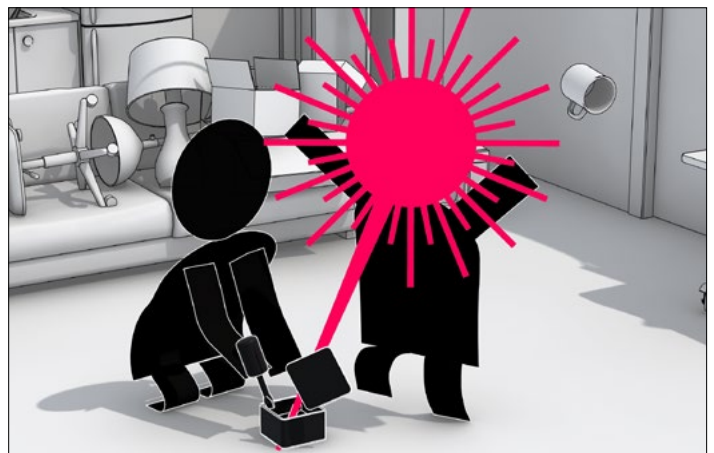
03 Mirrors and reflective objects may have adverse effects on tracking. So for now, remove or cover them up.



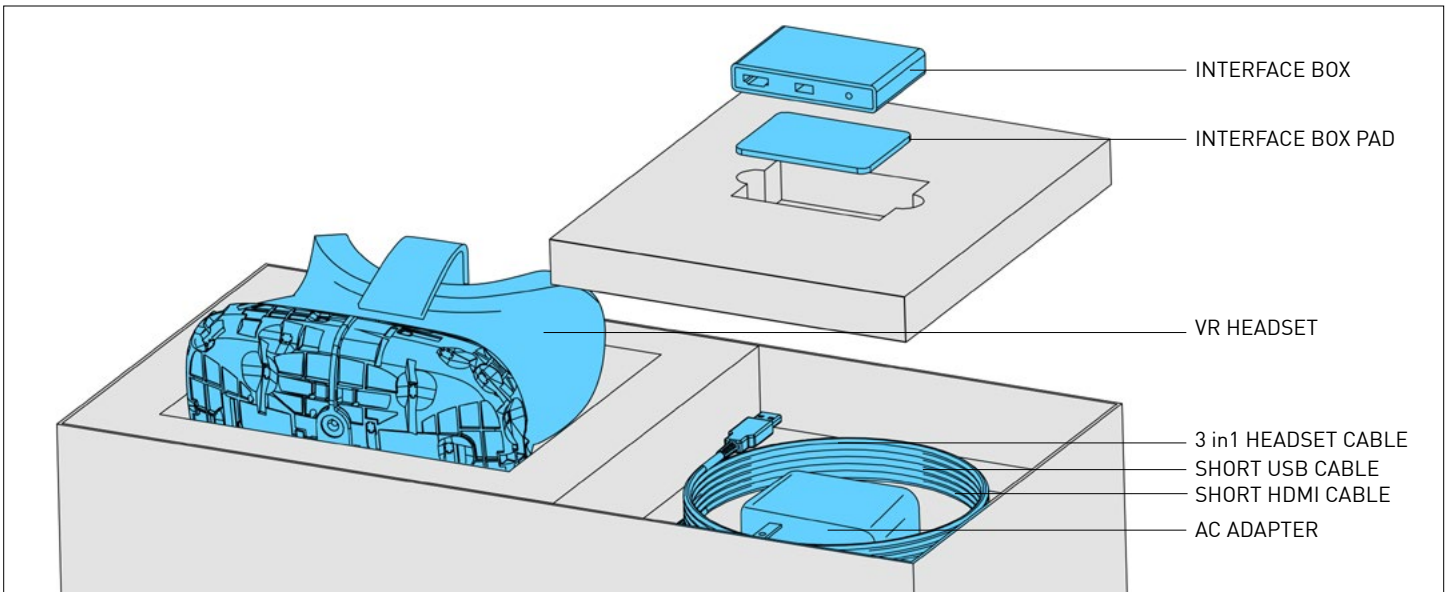
04 Clear the space that you will make your tracked area for VR.



05 Carefully unpack the contents of the Developer Edition boxes, refer to contents page for details.

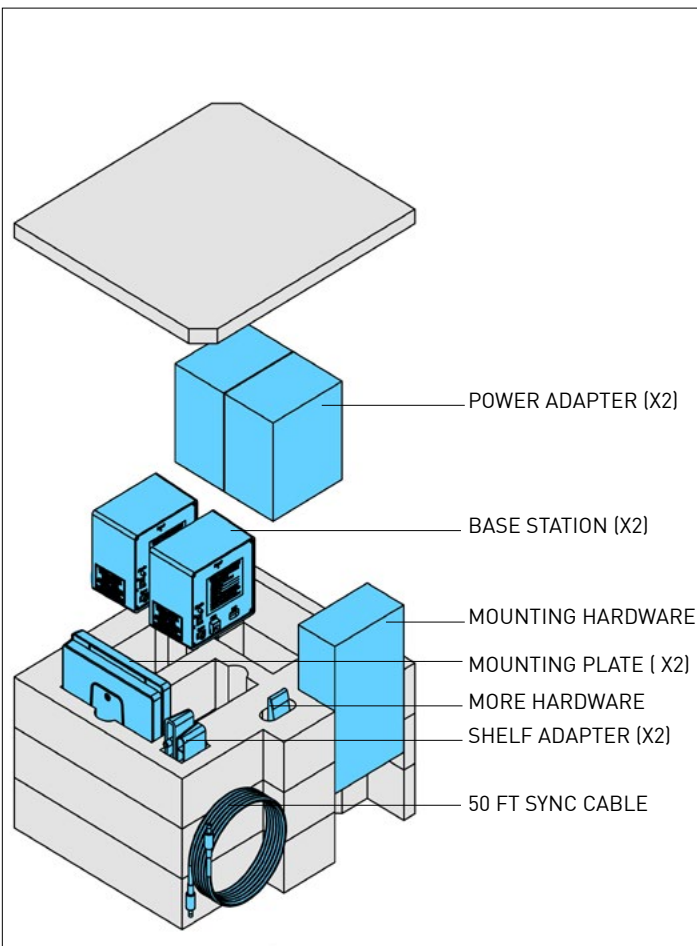


06 Do not attempt to pry open basestations. This could result in injury to hardware.



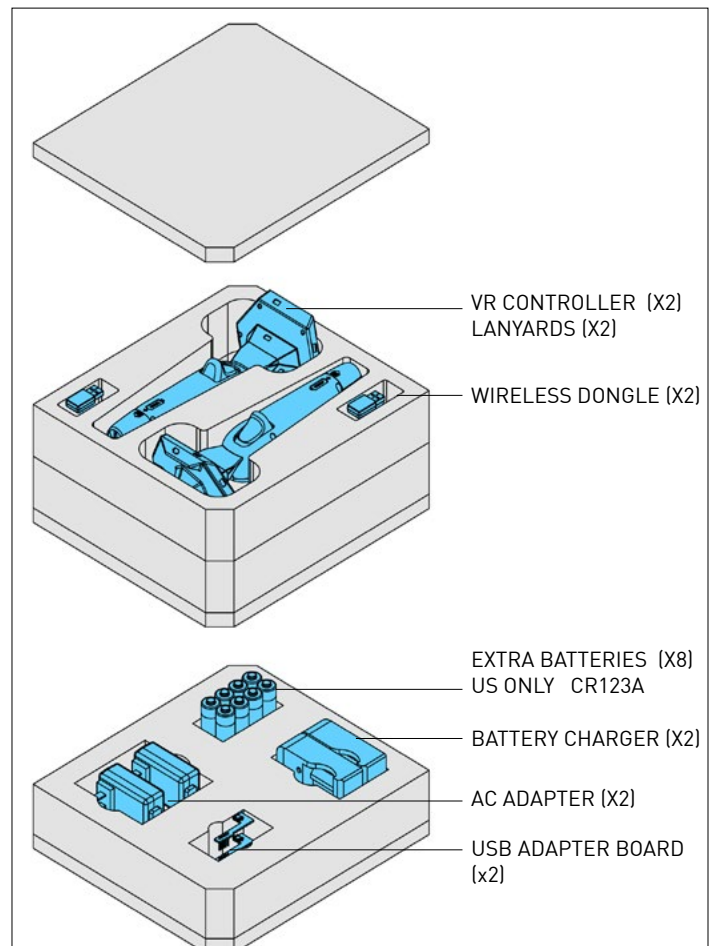
07

Check contents of Headset box



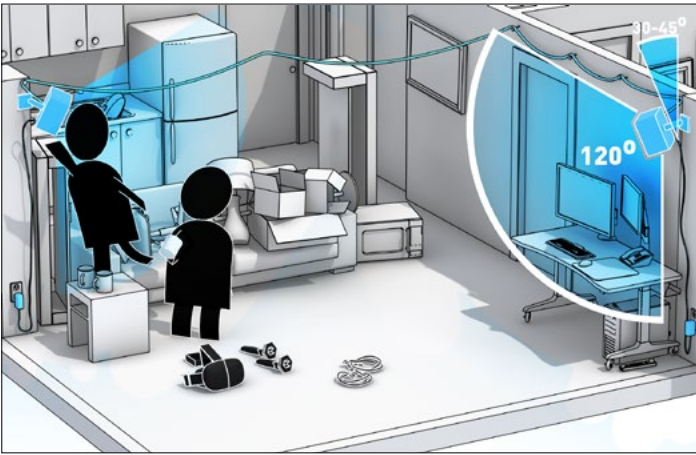
08

Check contents of Basestation box

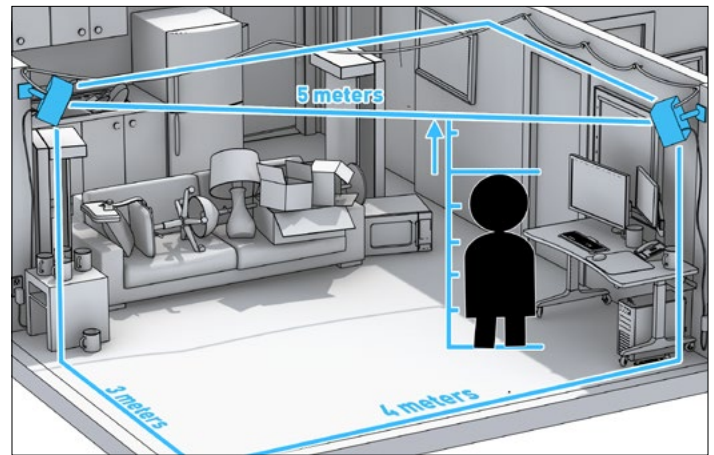


09

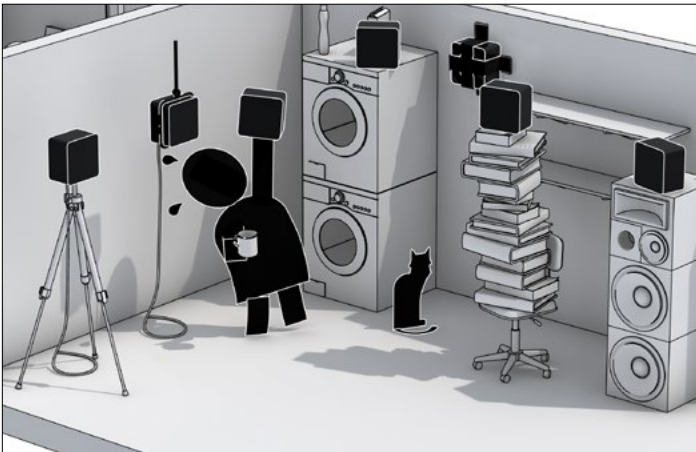
Check contents of VR Controller box



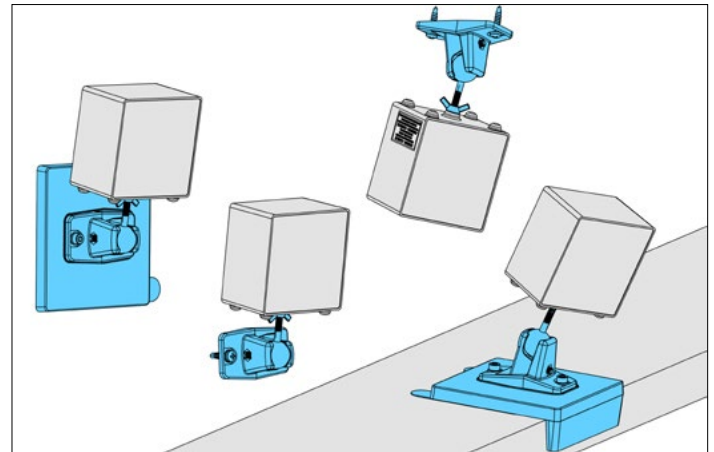
10 Find a location for basestation mounting at opposite corners of the tracked space. Mount above head height and angle down 30-45°. The basestation field of view is 120° in both axes



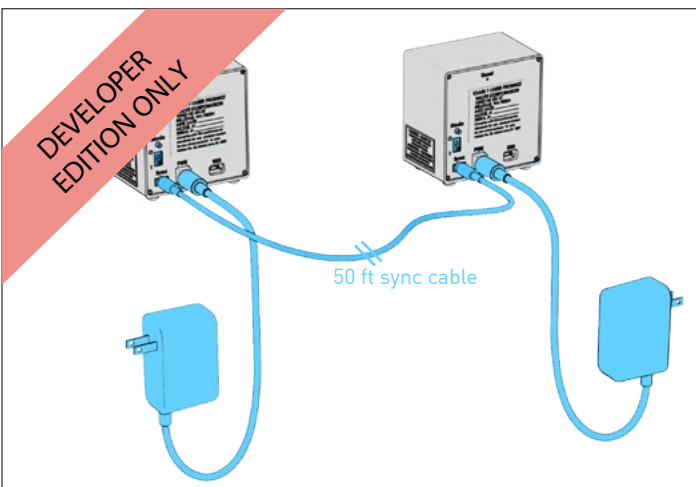
11 Max distance between units is 15ft/5M. Rough linear dimensions of playspace are: 12 x 9ft/ 4x3M. The area doesn't have to be a perfect square. Taping off the play space can be useful.



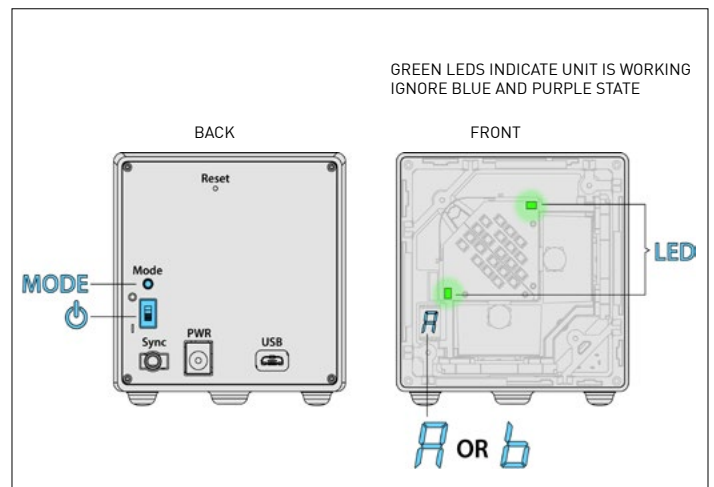
12 Avoid unstable mounting solutions or surfaces that are prone to vibration.



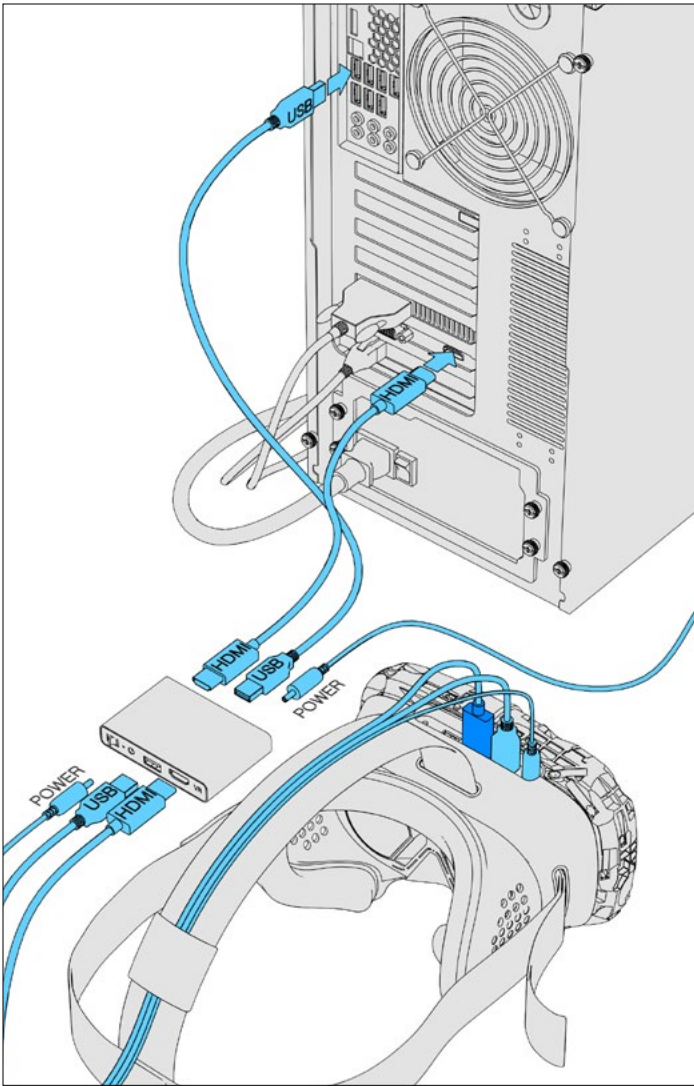
13 Included hardware allows basestations to be mounted to walls, ceilings, shelves or directly to a standard tripod. A braced floor to ceiling pole is also a good alternative. (see appendix)



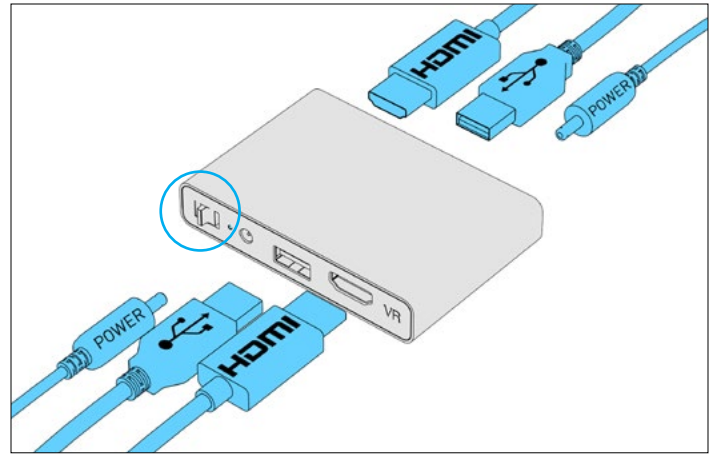
14 Attach power cable to each basestation. Connect them together with 50ft sync cable. Plug in and turn on with switch on back of unit. Later attach sync cable to ceiling.



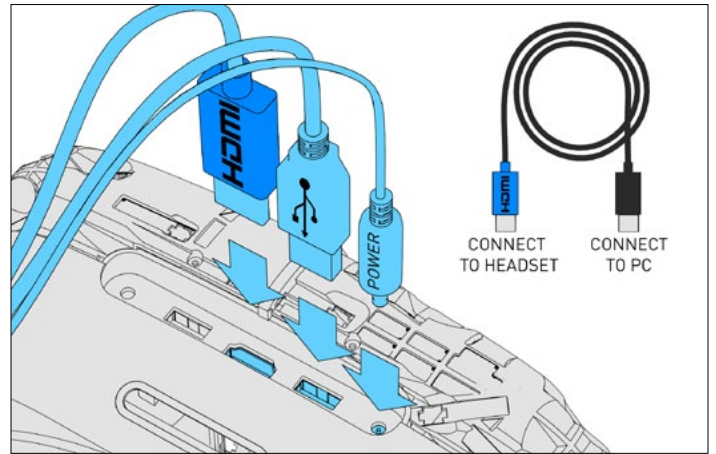
15 Set one unit to A and one to B using MODE.
 1) Long press: enter switching mode
 2) Short press: toggle between modes
 3) Long press: set mode



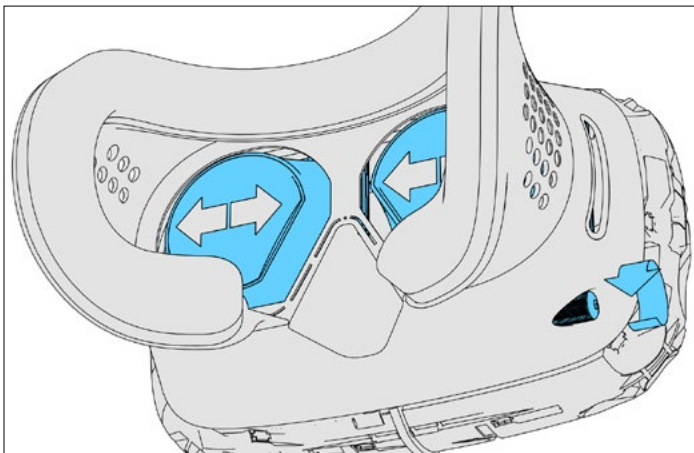
16 Connect headset to computer through interface box. Short cables connect to PC, long 3 in 1 cable connects to headset. See 17 & 18. Refer to forum for min PC specs.



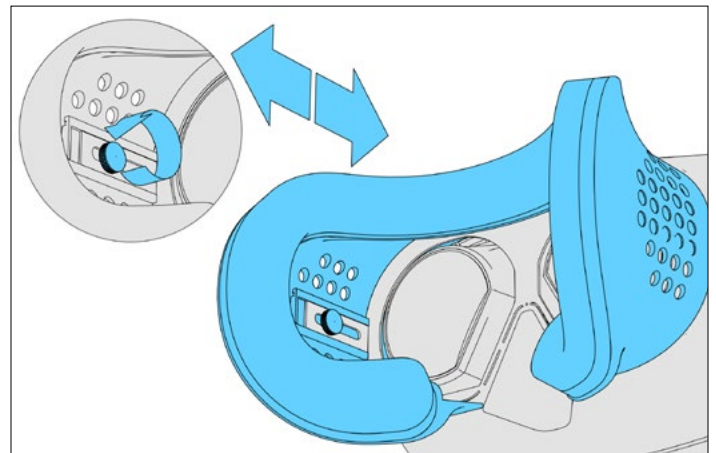
17 Interface box is directional. 'PC' side connects to short computer cables, 'VR' side connects to black ends of headset 3 in 1 cable. Turn power switch ON. LED will light up.



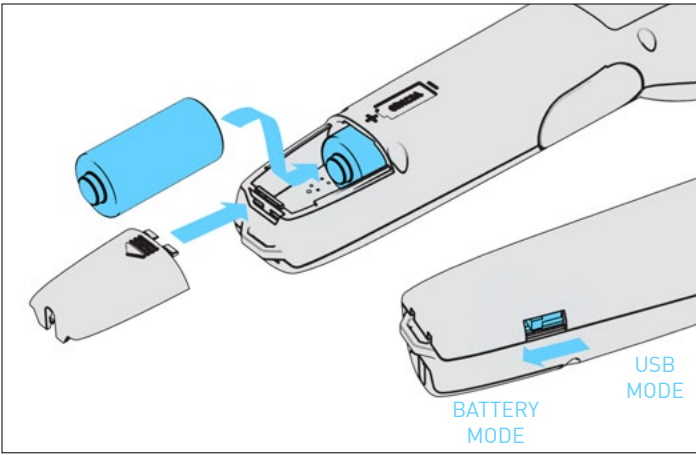
18 Plug USB, power and the **DARK BLUE** end of HDMI cable into top of headset. (HDMI is one way) Left two ports remain free (Audio & USB) Thread cables through loop on top of strap.



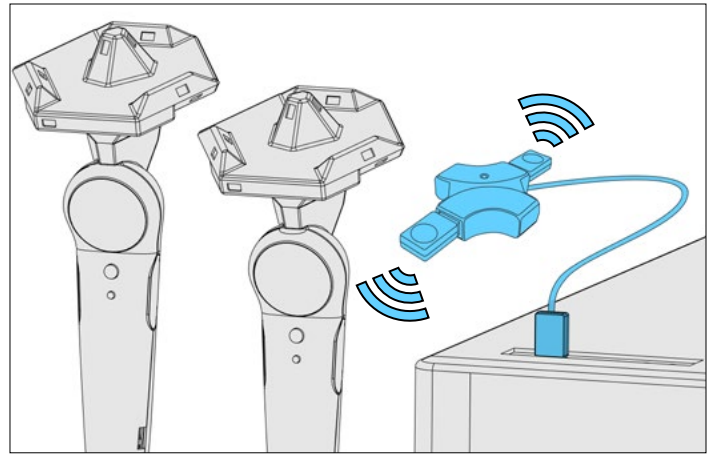
19 Use outside knob to adjust distance between lenses. This accomodates narrow or wide set eyes. Start in the middle if unsure. Remove lens film, see appendix for care.



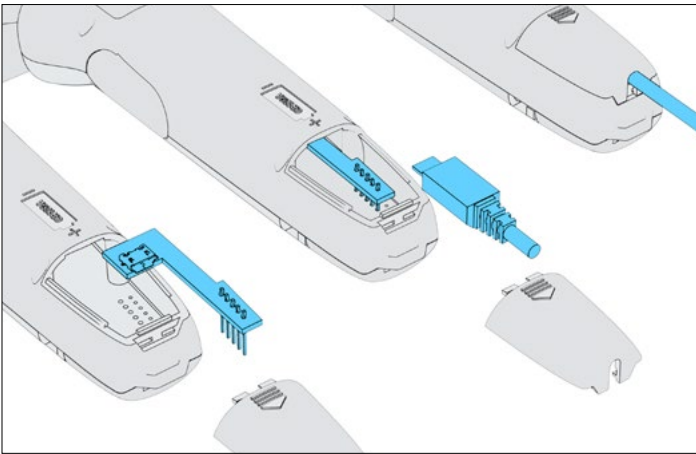
20 Space for eyewear can be created by extending face gasket out and re-tightening inside knob. Having lenses closer to your eye results in better field of view.



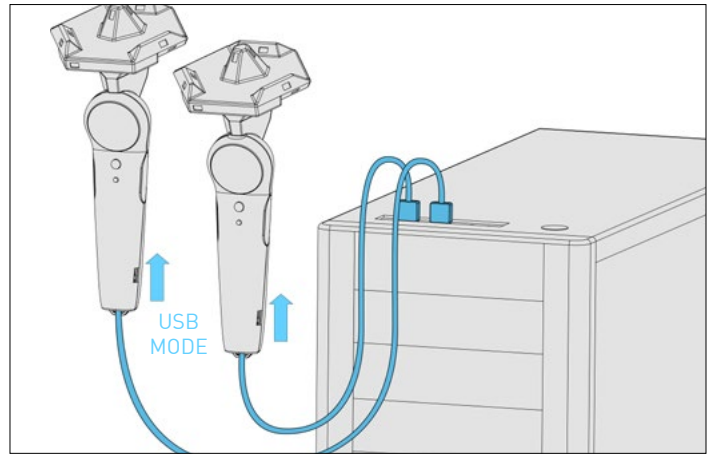
21 Wireless controllers need 2 batteries. Set switch on side to DOWN for battery mode. (UP is for USB mode) ON/OFF LED inside compartment. CHARGE BATTERIES FULLY BEFORE FIRST USE. Out of box they will only be partially charged.



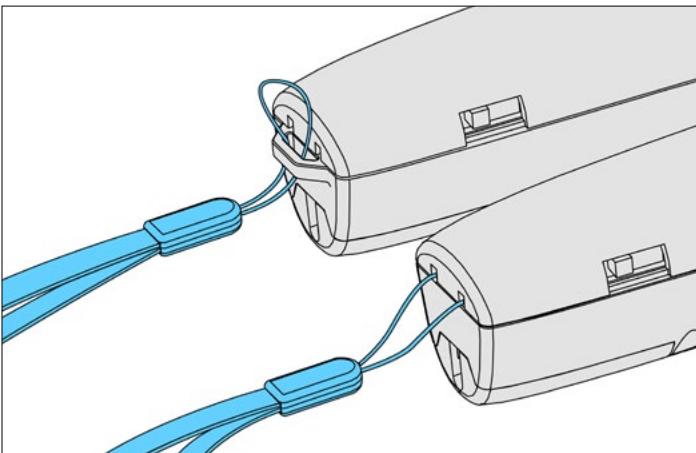
22 For wireless mode, use the two paired wireless USB dongles. Do not plug directly into USB 3.0. Use included USB hub for better reception.



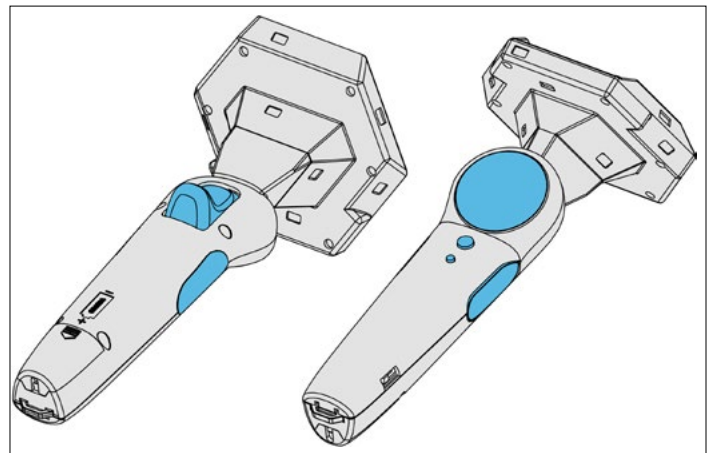
23 For wired controllers, insert board into battery compartment. Plug a micro USB cable (not included) into board and close battery door. See appendix for cables that fit inside handle.



24 For wired mode connect USB cables to PC. Set switch on side to UP for USB mode. Micro USB cables not included. For more items not included see appendix.



25 Seriously consider using the included wrist lanyards.



26 VR controller inputs include a trigger, trackpad, grip buttons, system and menu button.



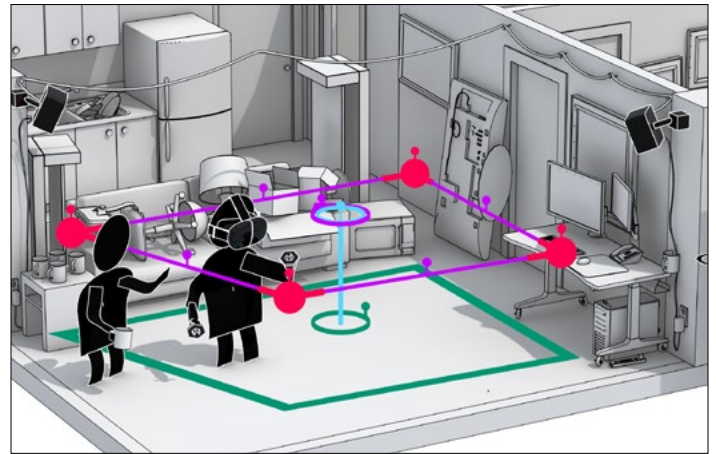
27 Install steam if not already installed. Login. From Steam, install Steam VR found in Library under Tools.



28 Right click on SteamVR, properties, beta participation, pick the beta. After install, launch Steam VR to start VR Monitor.



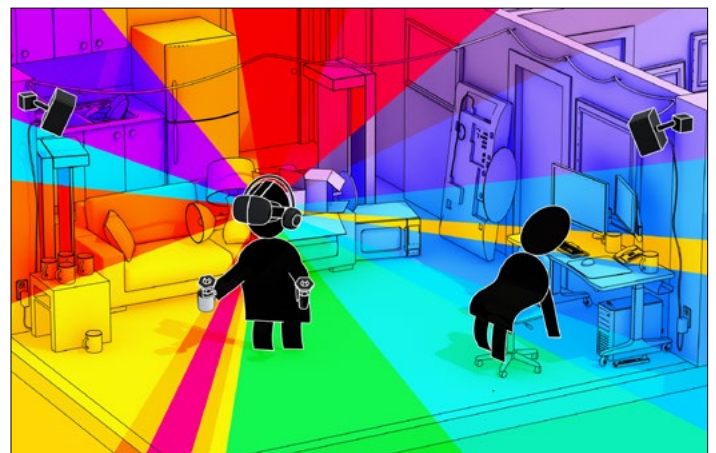
29 VR monitor reports the state of your system, yellow and red lights are bad, grey is also bad. Hover over lights for info.



30 Click step 3: 'Perform Room Setup' in VR Monitor. Put headset on and follow prompts to setup room.



31 Other Developers attempting to setup hardware can be found here <http://steamcommunity.com/app/358720/discussions/>



32 Enjoy VR

APPENDIX

EXTRA STUFF NOT INCLUDED BUT HANDY

FOR BASESTATIONS

- **Basestation power cable extension:** If you were disappointed that the included ones were too short <http://www.amazon.com/NEEWER%C2%AE-Dc12v-Extension-Security-Camera/dp/B00H5GVZBU/> (any 12v power extension will do)
- **Basestation inline cable switch:** so you can leave the basestations high up but switch them off at cable <http://www.amazon.com/JacobsParts-Manual-Extension-Voltage-Applications/dp/B00R1YKNT6/>
- **Floor to ceiling pole:** great for stable, temporary installations of basestations <http://www.amazon.com/gp/product/B00020JO9Q/>
- **Basestation pole mount:** good option for mounting basestation securely to 'floor to ceiling poles' <http://www.amazon.com/gp/product/B00E5M39AW/>
- **Mini Basestation tripod:** can also be attached to 'floor to ceiling pole' <http://www.amazon.com/gp/product/B000ANCPNM/>

FOR VR CONTROLLERS

- **Micro USB cables:** use your VR controller without batteries <http://www.amazon.com/AmazonBasics-USB-2-0-Cable-Meters/dp/B00NH124VM/>
- **USB extender hub:** Plug in your wireless USB dongles if you need better reception <http://www.amazon.com/Monoprice-4-Port-USB-Passive-106631/dp/B003WPK3E/>
- **Batteries:** if you need more (don't order the green Tenenergy batteries, they physically measure shorter) <http://www.amazon.com/Tenergy-RCR123A-900mAh-Rechargeable-Batteries/dp/B001BLQQ7S/>

FOR HEADSET

Headset lens care:

If the lenses become dirty, use a clean damp microfiber cloth. Gently wipe the surface of the lens top to bottom or left to right. **Never scrub the lens with anything.**

Never use wood based products (Tissues, paper towels, toilet paper) to attempt to clean the lenses.

Lens cleaning wipes: these are acceptable

<http://www.amazon.com/Zeiss-Pre-Moistened-Cleaning-Wipes-Count/dp/B0030E4UIQ/>

FOR YOU

- **IPD tool:** measure the distance between your pupils here

<https://pd.warbyparker.com/>

- **Coffee mug:**

<http://www.amazon.com/Culver-11-Ounce-Hampton-Ceramic-White/dp/B009HOP7IA/>

FOR MORE HELP

<http://steamcommunity.com/app/358720/discussions/>

or email

SteamVR@valvesoftware.com